

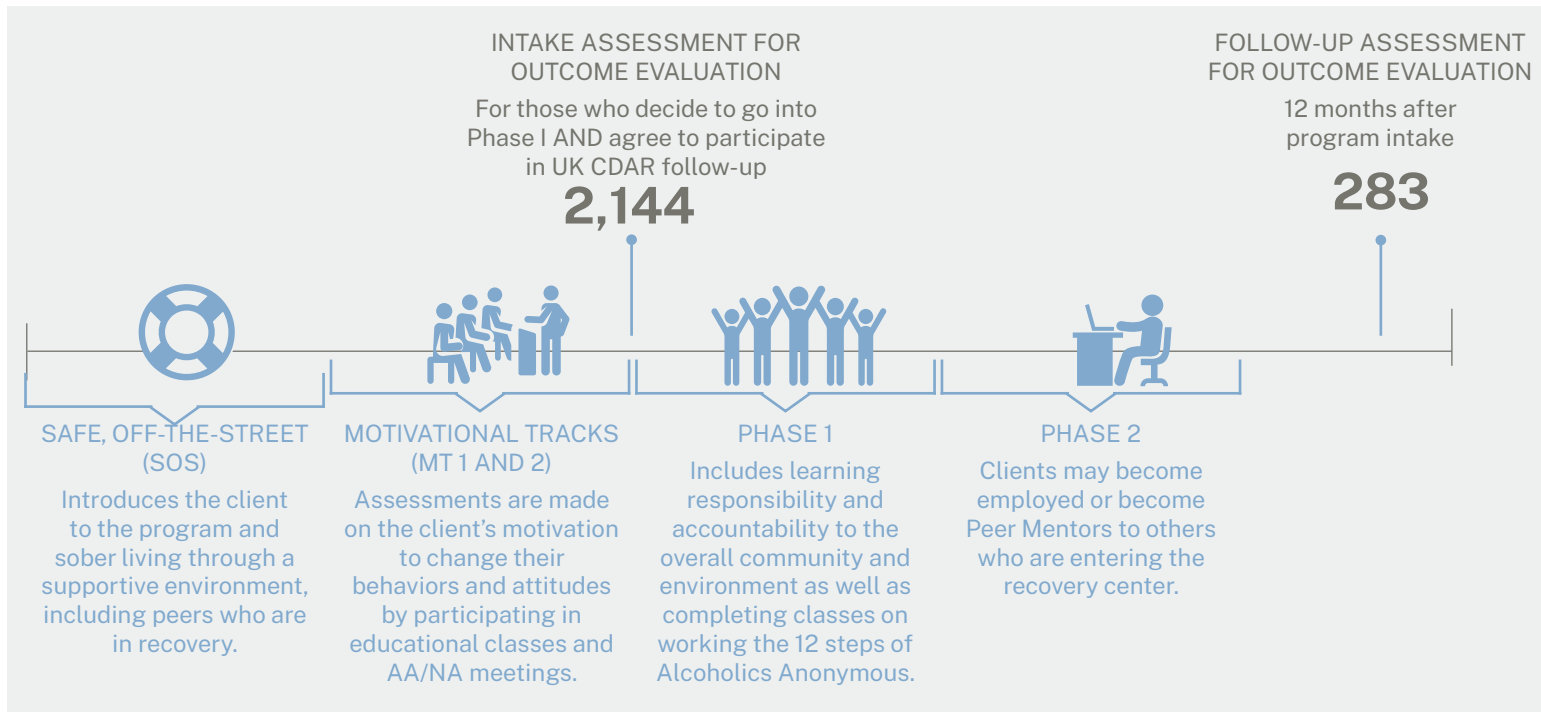


2022 Findings at a Glance

Findings from the Recovery Center Outcome Study

INTRODUCTION

Recovery Kentucky was created to help Kentuckians recover from substance abuse, which often leads to chronic homelessness. There are currently 18 Recovery Kentucky centers across the Commonwealth, providing housing and recovery services for up to 2,200 persons simultaneously. Recovery Kentucky is a joint effort by the Kentucky Department for Local Government (DLG), the Department of Corrections, and Kentucky Housing Corporation. Local governments and communities at each Recovery Kentucky center location have also contributed greatly to making these centers a reality.¹ The overall program is composed of 4 main components through which clients advance:



The Behavioral Health Outcome Studies team at the University of Kentucky Center on Drug and Alcohol Research (UK CDAR) independently conducts the Recovery Center Outcome Study (RCOS) which is an annual outcome evaluation that all of the 18 of the Recovery Kentucky centers that participated in RCOS this fiscal year.² Recovery center staff conduct an intake interview when clients enter Phase I after completing SOS and MT 1 and 2 to assess behaviors and problems clients had prior to entering the recovery center. Follow-up interviews are then conducted over the telephone by an interviewer at UK CDAR with eligible, consenting RCOS clients 12 months after Phase 1 entry. A random sample of eligible clients, stratified by target month (based on the intake month), and gender was selected. Client responses are kept confidential to help facilitate the honest evaluation of client outcomes and program services.

This Findings at a Glance report summarizes outcomes for 283 men and women who participated in a Recovery Kentucky program, completed a Phase 1 of a recovery center program and agreed to participate in RCOS between July 1, 2019 and June 30, 2020. At intake, most clients included in this report were White (92%), not currently married or cohabiting (75%), predominately male (51%) and, on average, 35 years old.

¹ For more information about Recovery Kentucky, contact KHC's Mike Townsend toll-free in Kentucky at 800-633-8896 or 502-564-7630, extension 715; TTY711; or email MTownsend@kyhousing.org.

FACTORS EXAMINED AT INTAKE AND FOLLOW-UP

Past-6-month substance use²



REPORTED ANY
ILLEGAL DRUG USE***

91% at intake | **19%** at follow-up



REPORTED OPIOID
USE***³

56% at intake | **3%** at follow-up



REPORTED
HEROIN USE***

37% at intake | **4%** at follow-up

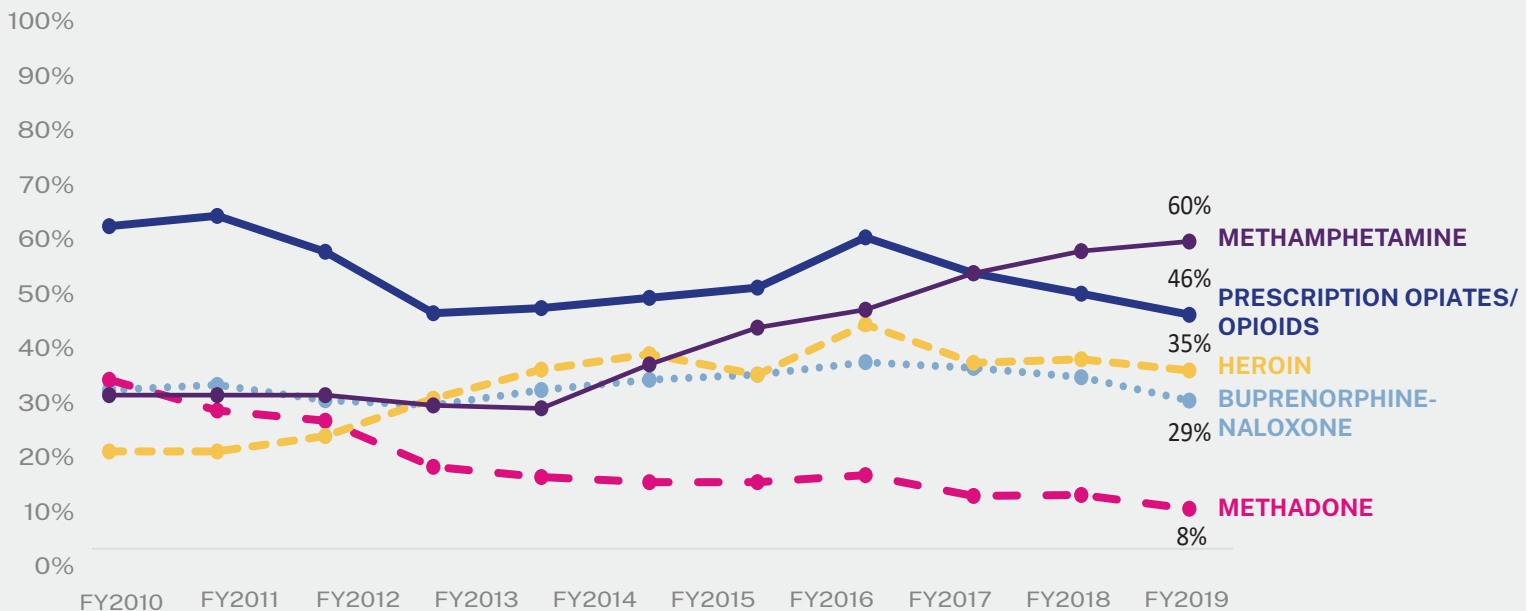


REPORTED
STIMULANT USE***⁴

63% at intake | **7%** at follow-up

How much has opioid and methamphetamine use changed over time?

This trend analysis examines the percent of RCOS clients who reported misusing prescription opiates/opioids, non-prescribed methadone, non-prescribed buprenorphine-naloxone (bup-nx), heroin, and methamphetamine in the 6 months before entering the program from FY 2010 to FY 2020.



REPORTED ANY
ALCOHOL USE***

39% at intake | **11%** at follow-up



REPORTED ALCOHOL
INTOXICATION***

33% at intake | **7%** at follow-up



REPORTED BINGE
DRINKING***

32% at intake | **4%** at follow-up

² Forty-five individuals were not included in the analysis of change in substance use from the 6 months before entering the recovery center to the 6 months before follow-up because they reported being incarcerated the entire period measured at intake (n = 43) and the entire 6-month period before the follow-up (n = 2).

³ Misuse of opioids other than heroin, including prescription opiates, methadone, and buprenorphine-naloxone.

⁴ Amphetamine, methamphetamine, ecstasy, Ritalin.

Past-6-month mental health



MET STUDY
CRITERIA FOR
DEPRESSION***

66%
at intake

22%
at follow-up



MET STUDY
CRITERIA FOR
ANXIETY***

71%
at intake

27%
at follow-up



MET STUDY CRITERIA FOR
COMORBID DEPRESSION
& ANXIETY***

61%
at intake

13%
at follow-up



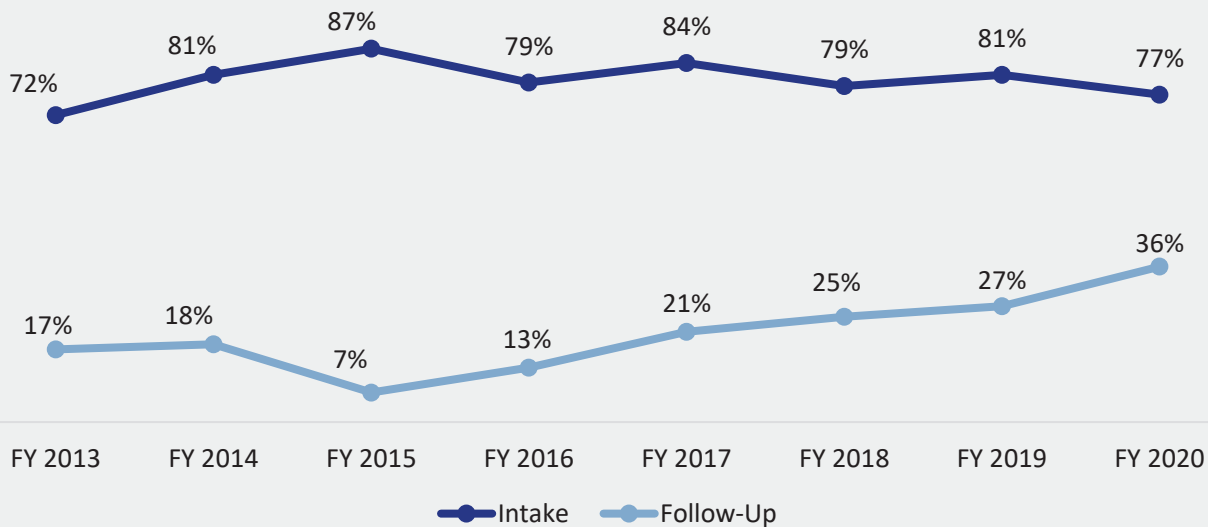
REPORTED SUICIDAL
IDEATION AND/OR
ATTEMPTS

23%
at intake

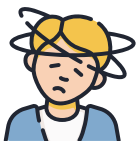
3%
at follow-up

Trends in depression and/or generalized anxiety

The number of clients meeting criteria for depression or generalized anxiety in the 6 months before entering the recovery center has fluctuated from a little less than three-fourths (72%) to 87% over the past seven fiscal years. Each year there has been a significant decrease from intake to follow-up in the number of clients reporting either depression or generalized anxiety – with the lowest percentage at follow-up in FY 2015 (7%) and the highest in FY 2020 (36%).



Past-30-day physical health



AVERAGE NUMBER
OF DAYS PHYSICAL
HEALTH WAS NOT
GOOD***

7.2
at intake

2.5
at follow-up



AVERAGE NUMBER OF
DAYS MENTAL HEALTH
WAS NOT GOOD***

16.0
at intake

4.7
at follow-up



REPORTED
CHRONIC PAIN***⁵

22%
at intake

10%
at follow-up

⁵ Past-6-month measure.

Past-6-month economic indicators



EMPLOYED AT LEAST
ONE MONTH***

50%
at intake

81%
at follow-up

GENDER WAGE GAP

At follow-up, employed women made only \$0.80 for every dollar employed men made.



\$1.00

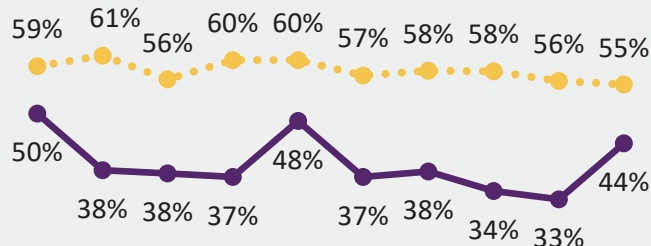


\$0.80

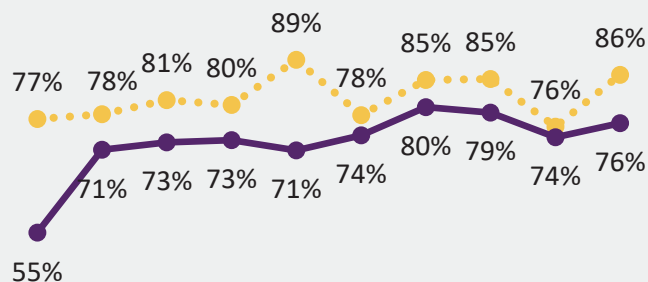
Trends in employment by gender

Since FY 2011, a disparity in employment between men and women in the RCOS follow-up sample has been evident.

INTAKE



FOLLOW-UP



FY 2011 FY 2012 FY 2013 FY 2014 FY 2015 FY 2016 FY 2017 FY 2018 FY 2019 FY 2020

FY 2011 FY 2012 FY 2013 FY 2014 FY 2015 FY 2016 FY 2017 FY 2018 FY 2019 FY 2020

..... Men

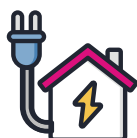
———— Women



CURRENTLY
HOMELESS***

31%
at intake

4%
at follow-up



REPORTED DIFFICULTY
MEETING BASIC LIVING
NEEDS***

39%
at intake

22%
at follow-up



REPORTED DIFFICULTY
MEETING HEALTH CARE
NEEDS***

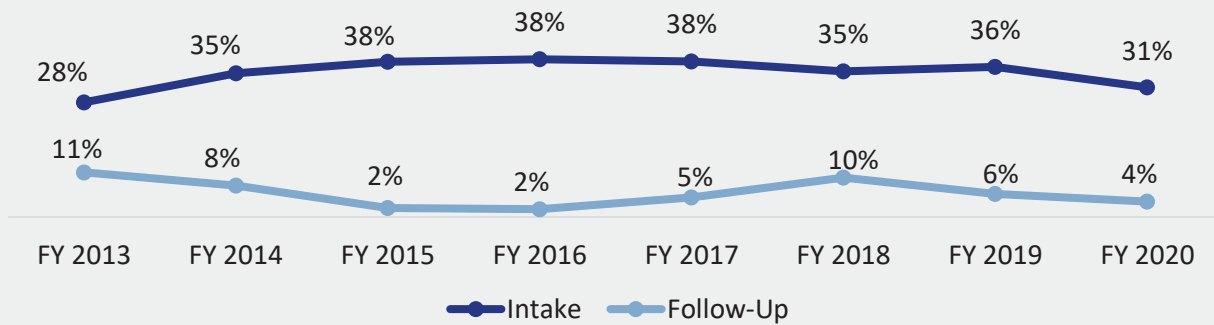
25%
at intake

10%
at follow-up

Trends in self-reported homelessness

On average, about one-third of clients entering Phase I of the recovery center reported that they were homeless in the 6 months before entering the program.

From FY 2013 to FY 2015, the percent of people reporting homelessness at intake increased and has remained stable from FY 2015 through FY 2019. The percent of people reporting homeless at follow-up decreased from FY 2013 to FY 2015 and had a slight increase in FY 2017 (5%) and then doubled in FY 2018 to 10%, with a reduction to 6% in FY 2019 and 4% in FY 2020.



Past-6-month criminal justice involvement



REPORTED ANY
ARREST***

67% at intake
6% at follow-up



REPORTED BEING
INCARCERATED***

86% at intake
7% at follow-up

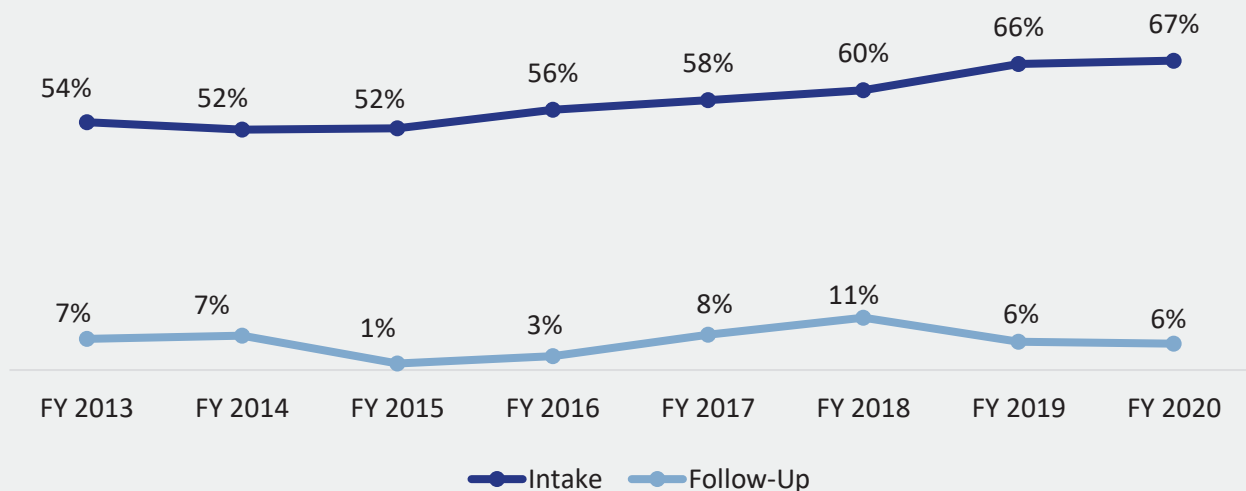


REPORTED CRIMINAL
JUSTICE SUPERVISION***

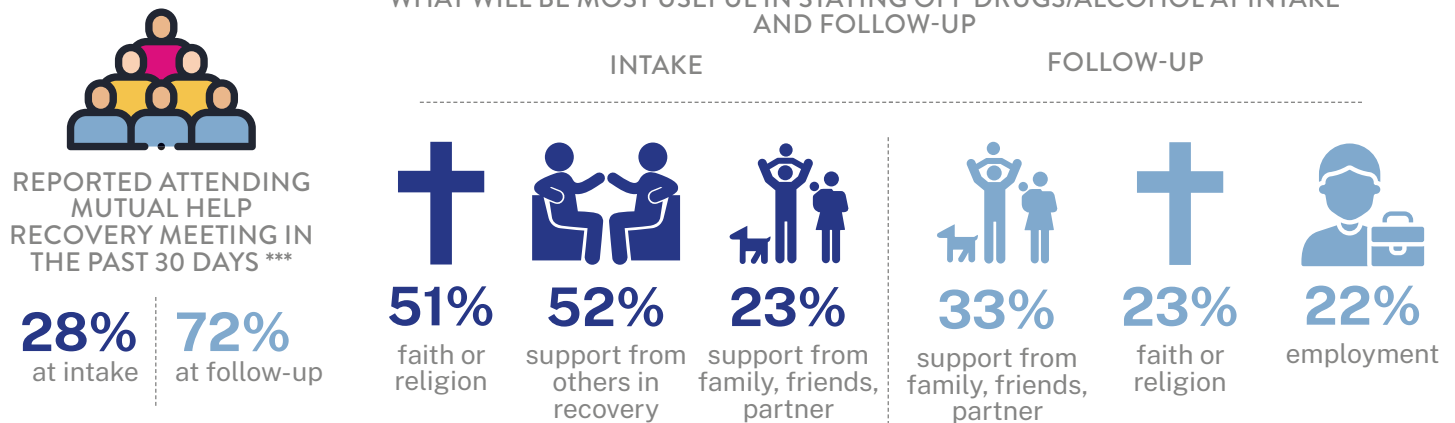
83% at intake
69% at follow-up

Trends in arrests

Over the past 8 years, over half of RCOS clients reported being arrested at least once in the past 6 months. Each year, at follow-up, significantly fewer clients reported an arrest in the past 6 months.

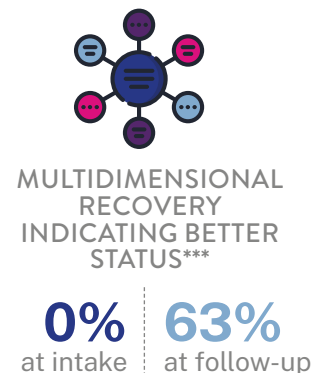


Recovery supports



Past-6-month multidimensional recovery

The multidimensional recovery measure uses items from the intake and follow-up surveys to classify individuals who have all positive dimensions of recovery. The positive dimensions of recovery include: having no substance use disorder, being employed full-time or part-time, not being homeless, having no arrests or incarceration, having no suicidal thoughts or attempts, having fair to excellent health, having recovery support, and having a mid to high quality of life.



RETURN ON INVESTMENT IN RECOVERY CENTER SERVICES

Estimates of the cost per drug user and alcohol user were applied to the sample to examine the total costs of drug and alcohol abuse to society in relation to expenditures on the Recovery Kentucky program. The cost savings analysis suggests that for every dollar invested in recovery services there was an estimated \$2.45 return in avoided costs (i.e., costs to society that would have been expected given the costs associated with drug and alcohol use).



CONCLUSION

Overall, Recovery Kentucky program clients made significant strides in all of the targeted areas and have much more support for their recovery after participating in program services.⁶ In addition, the Recovery Kentucky Program saved taxpayer dollars through avoided costs to society or costs that would have been expected based on the rates of drug and alcohol use.

Suggested citation: Cole, J., Logan, T., & Scrivner, A. (2022). *Findings from the Recovery Center Outcome Study 2022 Findings at a Glance*. Lexington, KY: University of Kentucky, Center on Drug and Alcohol Research.

⁶ It is important to keep in mind that the RCOS sample includes only clients who advanced to Phase 1 after completing the SOS and Motivational Tracks and who agreed to be contacted for the follow-up survey 12 months after entering Phase I.