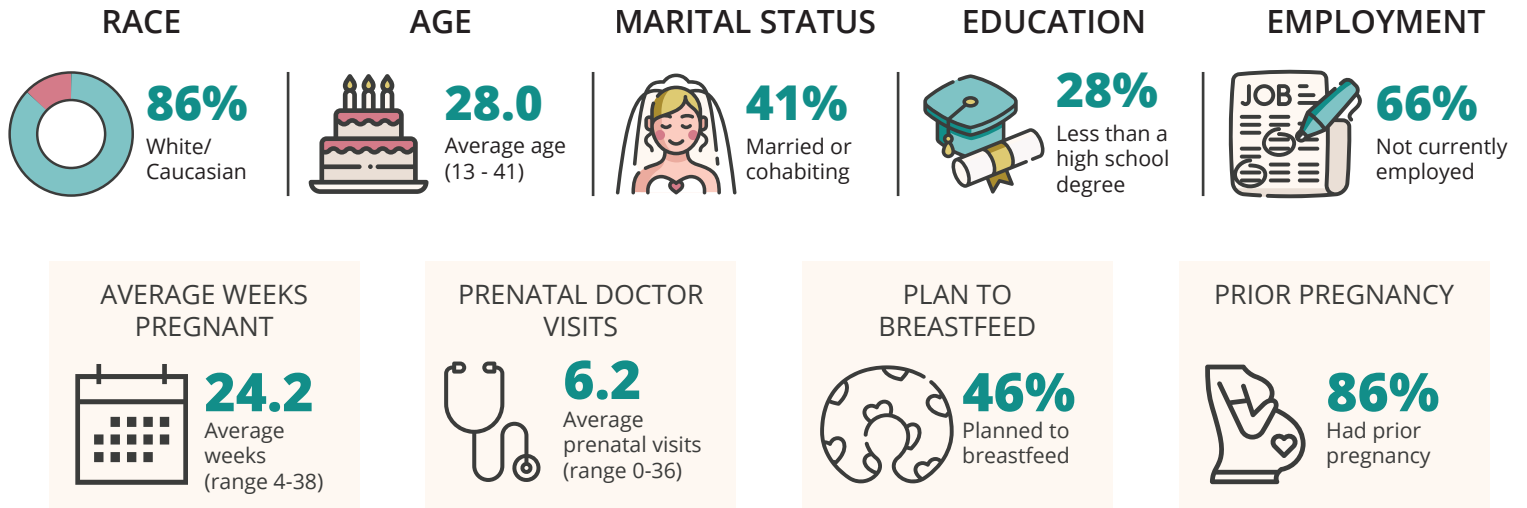


Who is Served by the KY-Moms MATR Program?

A Snapshot of Pregnant Clients at Baseline

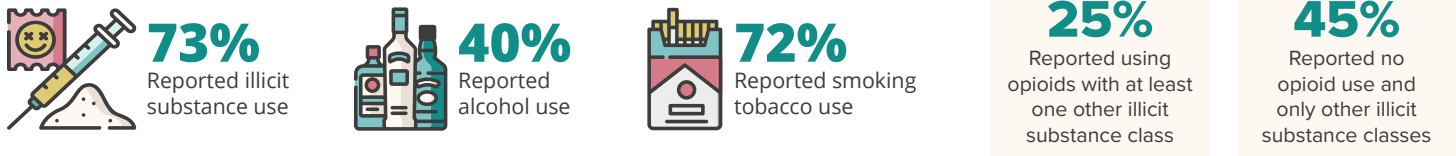
The KY-Moms MATR case management program is administered by the Division of Substance Use Disorder in the Department for Behavioral Health, Developmental and Intellectual Disabilities; KY-Moms MATR (502) 782-6192

This fact sheet summarizes characteristics reported by 79 pregnant women in the KY-Moms MATR program who completed a pre-birth baseline assessment between July 2022 and December 2023.



Risk Factors at Baseline

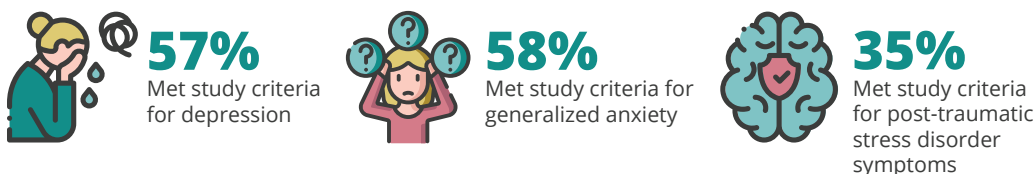
SUBSTANCE USE 6 MONTHS BEFORE PREGNANCY



ADVERSE CHILDHOOD EXPERIENCES (ACE)



MENTAL HEALTH 6 MONTHS BEFORE PREGNANCY



INTIMATE PARTNER VIOLENCE 6 MONTHS BEFORE PREGNANCY

