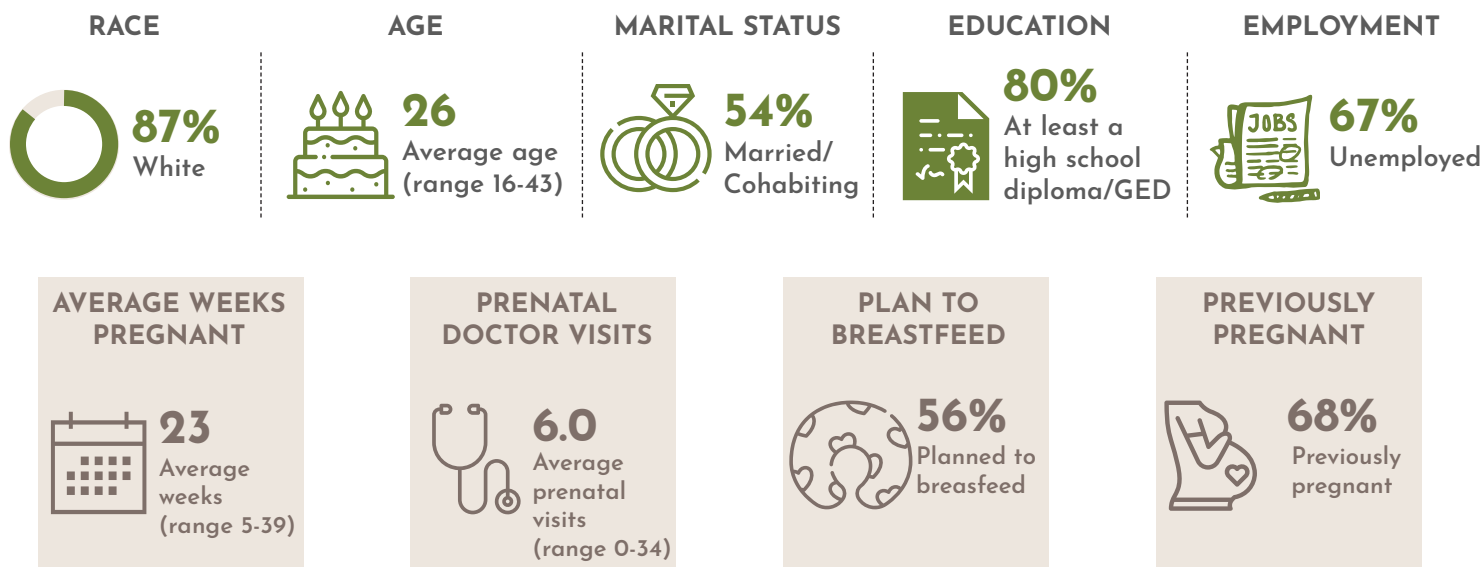


# Who is Served by the KY-Moms MATR Program?

## *A Snapshot of Pregnant Clients at Baseline*

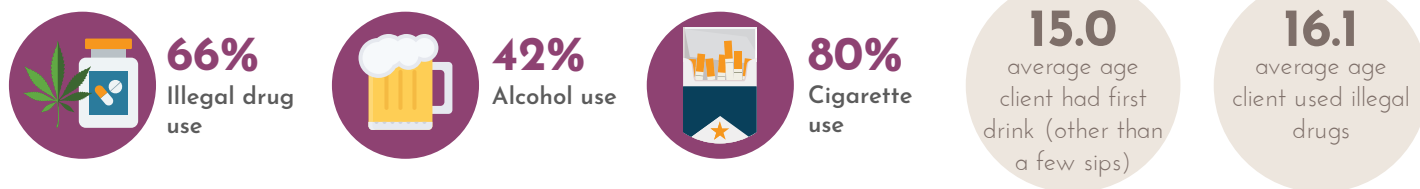
The KY-Moms MATR case management program is part of the Governor's Office of Early Childhood's Kentucky Invests in Developing Success NOW (KIDS NOW) and is administered by the Division of Behavioral Health in the Department for Behavioral Health, Developmental and Intellectual Disabilities; KY-Moms MATR (502) 564-4456/ (800) 374-9146

This fact sheet summarizes characteristics reported by 158 pregnant women in the KY-Moms MATR program who completed a baseline assessment between May 2017 and December 2018.



### Risk Factors at Baseline

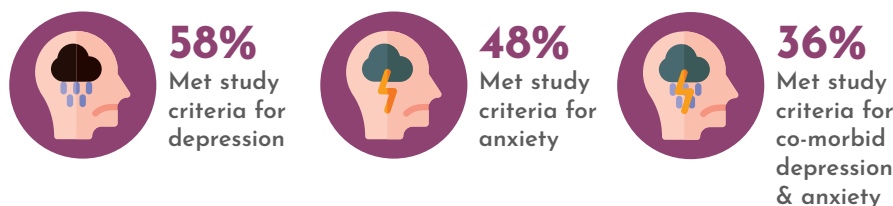
#### SUBSTANCE USE 6 MONTHS BEFORE PREGNANCY



#### ADVERSE CHILDHOOD EXPERIENCES (ACE)



#### MENTAL HEALTH 6 MONTHS BEFORE PREGNANCY



#### INTIMATE PARTNER ABUSE 6 MONTHS BEFORE PREGNANCY

