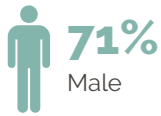


# Adolescent Substance Abuse Treatment Clients at Intake

ADOLESCENT KENTUCKY TREATMENT OUTCOME STUDY INTAKE FACT SHEET | 2022

This fact sheet summarizes characteristics reported by 300 clients who participated in the Adolescent Kentucky Treatment Outcome Study (AKTOS) and completed an intake assessment in FY 2019 and FY 2020.

## GENDER



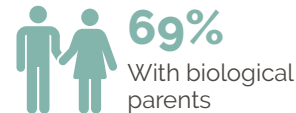
## RACE



## AGE



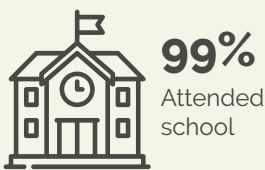
## LIVING SITUATION



## REFERRED BY



## SCHOOL STATUS



## TIME SPENT ON DEVICES ON WEEKDAYS

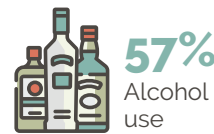


## TOP THREE ACTIVITIES CLIENTS SPENT THE MOST TIME ENGAGED IN (EXCLUDING SCHOOL/WORK)

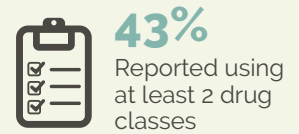


## Risk Factors at Intake

### SUBSTANCE USE 12 MONTHS BEFORE PROGRAM ENTRY\*

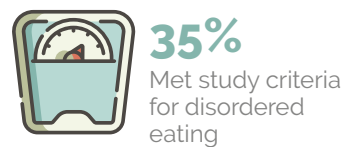
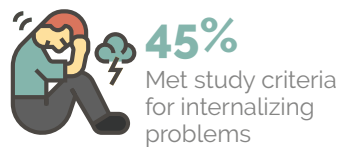
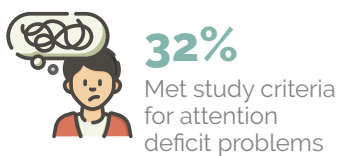


### POLYSUBSTANCE USE<sup>1</sup>



\* Among clients who were not in a controlled environment all 365 days before intake.

### MENTAL HEALTH 12 MONTHS BEFORE PROGRAM ENTRY



### ADVERSE CHILDHOOD EXPERIENCES

**7%**  
0 ACE

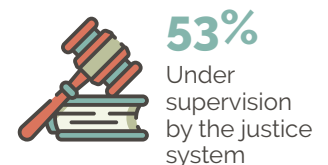
**43%**  
1-3 ACE

**37%**  
4-6 ACE

**14%**  
7-10 ACE

**3.7**  
Average ACE

### CRIMINAL JUSTICE INVOLVEMENT IN THE 12 MONTHS BEFORE PROGRAM ENTRY



<sup>1</sup> The drug classes examined were (1) Marijuana/cannabis, (2) Prescription opioids, (3) Buprenorphine, (4) Methadone, (5) Heroin, (6) Tranquilizers/sedatives/benzodiazepines, (7) Stimulants, (8) Cocaine, (9) Hallucinogens, (10) Inhalants, (11) Synthetic drugs, and (12) Barbiturates.