

2. Demographics

Adolescents ages 12 to 17 comprise 8.2% of Kentucky's population. Table 2.1 presents the 2005 United States Census based population distribution of adolescent Kentuckians¹⁸ by age and gender. Males represent 51.4% of Kentucky adolescents compared to 48.6% females. The weighted survey ratios are very similar to the population ratios for gender and age. (For more on weighting, please refer to the Methods section, page 23.)

Table 2.1: 2005 United States Census Kentucky adolescent population estimates by age and gender

age	Males	Females	Total
12	29,214	27,753	56,967
13	29,578	28,070	57,648
14	29,841	27,932	57,773
15	28,990	27,336	56,326
16	28,552	27,094	55,646
17	28,720	26,902	55,622
	174,895	165,087	339,982

The survey ratios for race/ethnicity were slightly under-representative for Hispanics and African-Americans but very close to Asian/Pacific Islander and Native American estimates. It should be noted that race/ethnicity estimates are based on the entire population rather than adolescents only. Table 2.2 presents the comparison of race and ethnicity between State population estimates and the adolescent survey participants.

Table 2.2: Kentucky adolescent race and ethnicity estimates (Survey questions q16, q19)

	Population Estimate	Survey Sample
Hispanic (any race)	1.9%	1.0%
White	90.4%	93.4%
African American	7.5%	4.2%
Asian or Pac. Islander	0.9%	0.9%
Native American	0.2%	0.4%

SECTION TWO: DEMOGRAPHICS

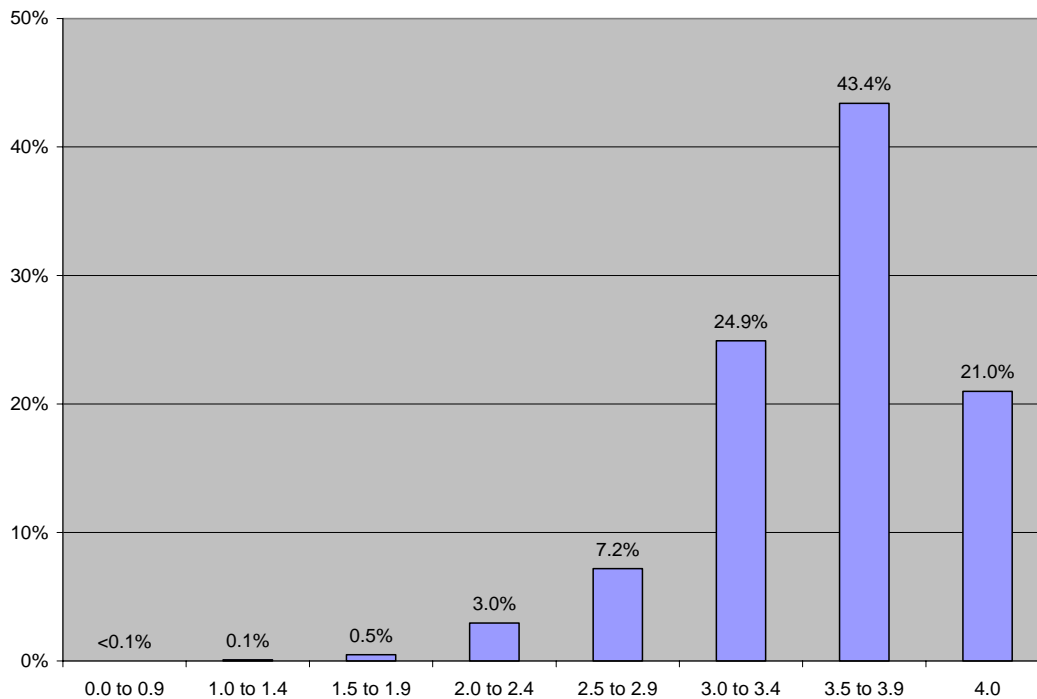
The majority of survey participants (77.8%) were either the only person under 18 living in the household or one of two persons under 18 living in the household. Over two-thirds (69.4%) of adolescents live in a household with two adults. Table 2.3 presents the distribution of households by the number of adults or children (all persons under 18 years old) living in the house.

Table 2.3: Kentucky household distribution by the number of adults and children living in the home (Survey questions q9, q10)

	Adults in Household	Children in Household
1	9.3%	40.8%
2	69.4%	36.9%
3	17.5%	14.8%
4+	3.8%	7.4%

Almost all survey participants were enrolled in school (98.3%). There were no significant age or gender differences between adolescents enrolled and not enrolled in school. An estimated 5,794 adolescent Kentuckians were not enrolled in school last year. Just over 80% of adolescents not enrolled in school reported they were home schooled and 11.1% reported they dropped out of school. Figure 2.1 presents the distribution of grade point average for survey respondents. Note: About half of respondents provided their GPA and only GPA's using a 4.0 scale were included in Figure 2.1.

Figure 2.1: Distribution of grade point averages (Survey question q14)



SECTION TWO: DEMOGRAPHICS

Of the 16 and 17 year old adolescents, 53.4% reported having a driver's license. There was a higher percent of 16 and 17 year olds having a cell phone for personal use (73.4%) than having their driver's license (53.5%). Older adolescents were more likely to have a cell phone than younger adolescents. Table 2.4 presents the percent of adolescents who have a cell phone for personal use by age group.

Table 2.4: Percent of adolescent Kentuckians with a cell phone for personal use by age group (Survey question q23)

12 to 13	14 to 15	16 to 17	Total
34.5%	59.0%	73.4%	55.4%

This page intentionally left blank